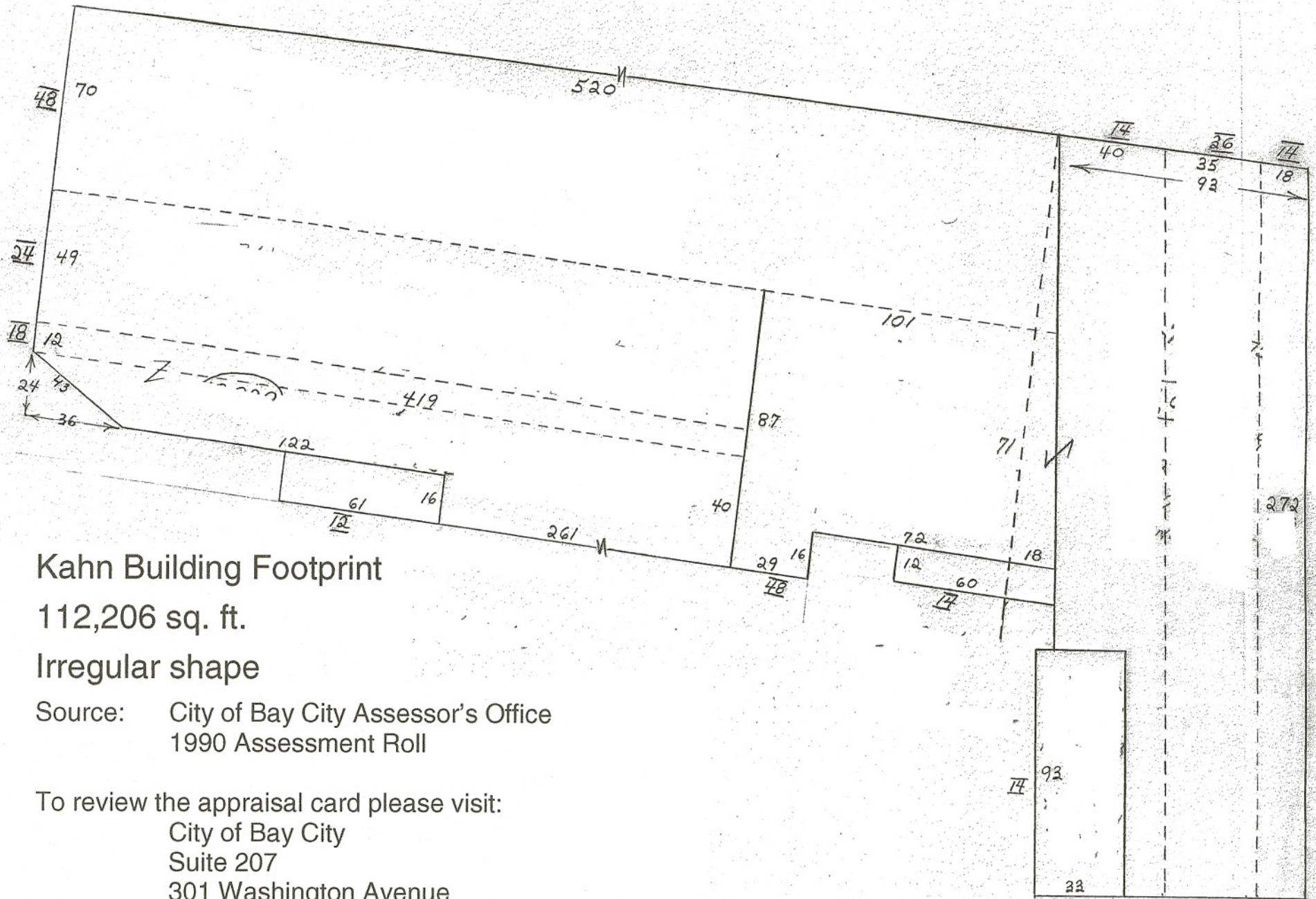


No. 1



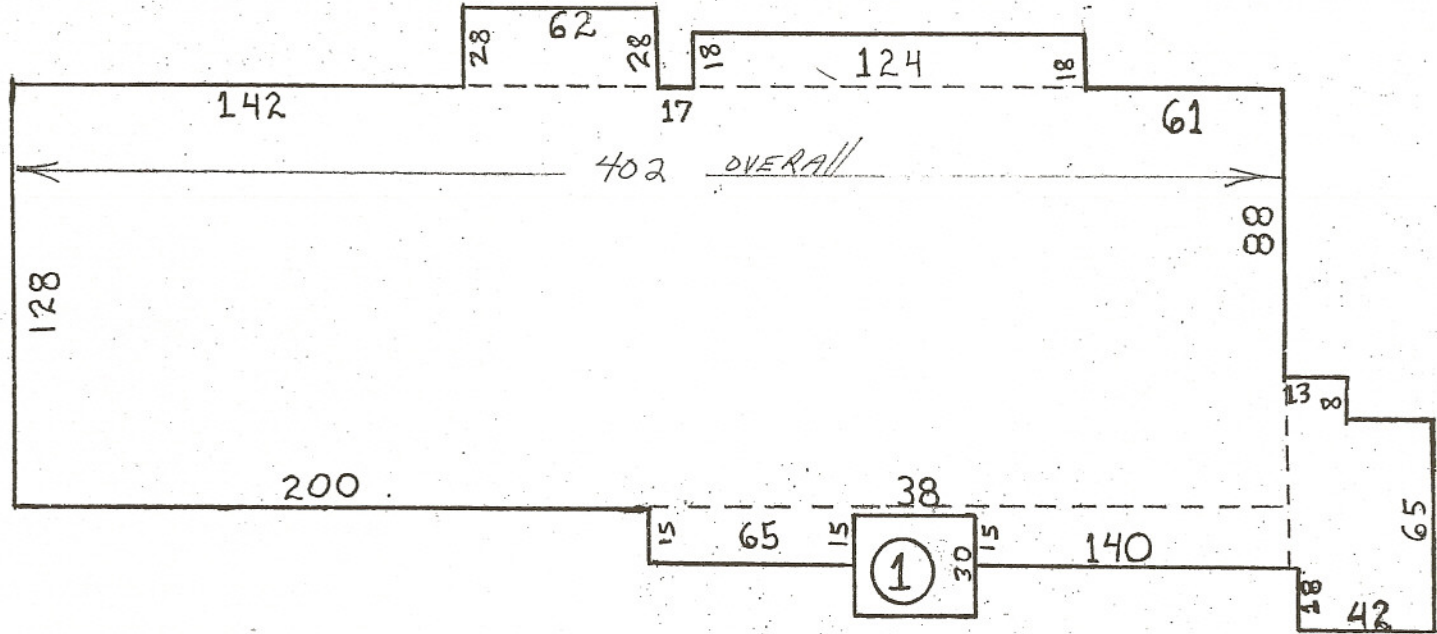
Kahn Building Footprint

112,206 sq. ft.

Irregular shape

Source: City of Bay City Assessor's Office
1990 Assessment Roll

To review the appraisal card please visit:
City of Bay City
Suite 207
301 Washington Avenue
Bay City, Michigan 48708
Office: 989-894-8123



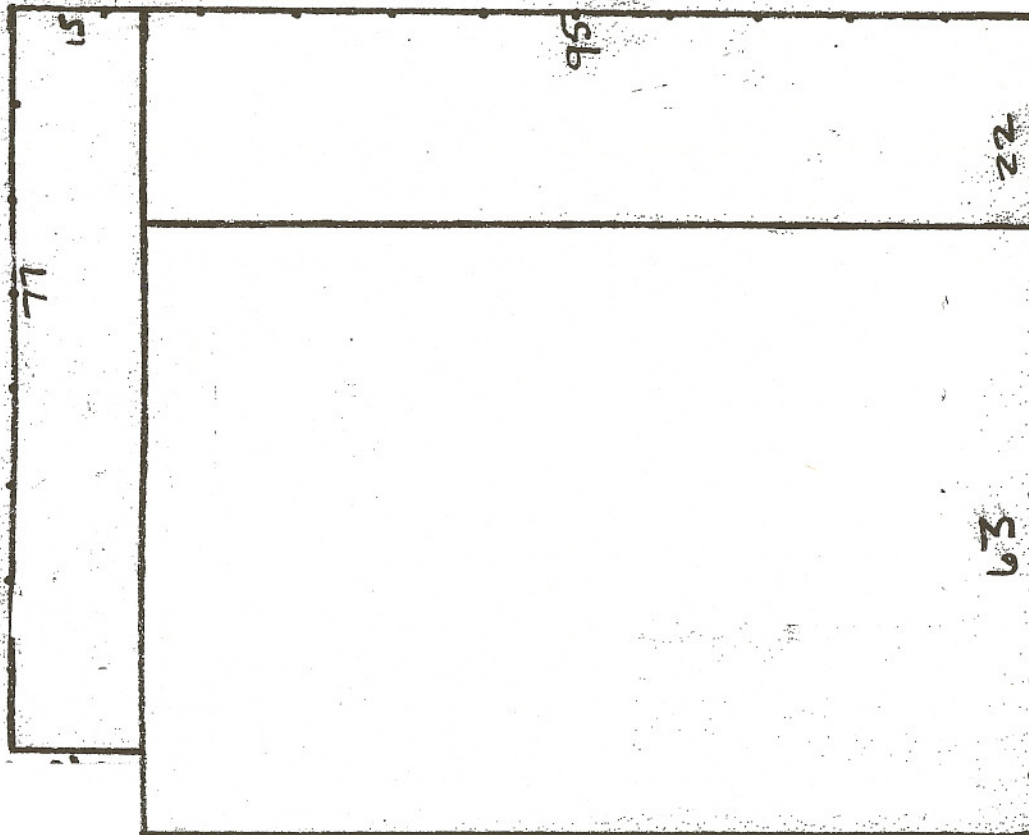
Foundry Building Footprint

51,456 sq. ft. - 402' x 128'

Source: City of Bay City Assessor's Office
1990 Assessment Roll

To review the appraisal card please visit:

City of Bay City
Suite 207
301 Washington Avenue
Bay City, Michigan 48708
Office: 989-894-8123



Monarch Building

(former Powerhouse/CE)

15,215 sq. ft.

110' x 87'

Source: City of Bay City Assessor's Office
1990 Assessment Roll

To review the appraisal card please visit:

City of Bay City

Suite 207

301 Washington Avenue

Bay City, Michigan 48708

Office: 989-894-8123