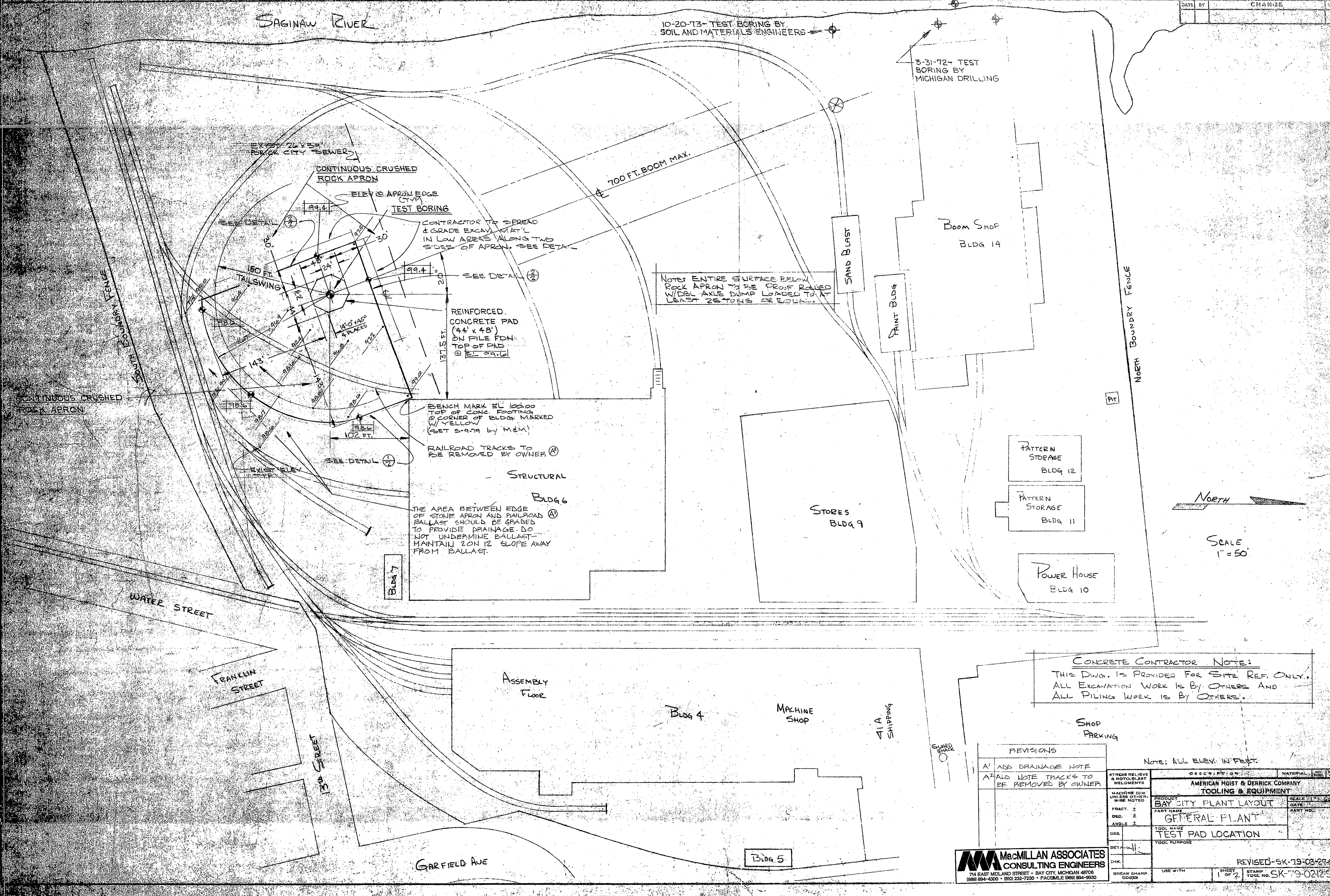


SAGINAW RIVER

10-20-73- TEST BORING BY  
SOIL AND MATERIALS ENGINEERS

3-31-72- TEST BORING BY  
MICHIGAN DRILLING



NOTE: ENTIRE SURFACE BELOW ROCK APRON TO BE PROOF ROLLED W/DBL AXLE DUMP LOADED TO AT LEAST 25 TONS OR EQUIV.

CONTRACTOR TO SPREAD & GRADE EXCAV. MAT'L IN LOW AREAS ALONG TWO SIDES OF APRON. SEE DETAIL.

REINFORCED CONCRETE PAD (44' x 48') ON PILE FON TOP OF PAD @ ELEV. 99.6

BENCH MARK EL 100.00 TOP OF CONE FOOTING @ CORNER OF BLDG MARKED W/ YELLOW (SET 5-9-79 BY M&M)

RAILROAD TRACKS TO BE REMOVED BY OWNER

THE AREA BETWEEN EDGE OF STONE APRON AND RAILROAD BALLAST SHOULD BE GRADED TO PROVIDE DRAINAGE. DO NOT UNDERMINE BALLAST - MAINTAIN 20% SLOPE AWAY FROM BALLAST.

CONCRETE CONTRACTOR NOTE:  
THIS DWG. IS PROVIDED FOR SITE REF. ONLY.  
ALL EXCAVATION WORK IS BY OTHERS AND  
ALL PILING WORK IS BY OTHERS.

REVISIONS

A1	ADD DRAINAGE NOTE
A2	ADD NOTE TRACKS TO BE REMOVED BY OWNER

NOTE: ALL ELEV. IN FEET

STRESS RELIEVE & HOT-BLAST WELDMENTS	DESCRIPTION	MATERIAL	NO. PART
MACHINE DIM. UNLESS OTHERWISE NOTED	AMERICAN HOIST & DERRICK COMPANY		
FRACT. ±	TOOLING & EQUIPMENT		
DEC. ±	PRODUCT		
ANGLE ±	BAY CITY PLANT LAYOUT		
DWG.	PART NAME		
DET. ±	GENERAL PLANT		
CHK.	TOOL NAME		
BREAK SHARP EDGES	TEST PAD LOCATION		
	TOOL PURPOSE		
	USE WITH	SHEET	REVISED-SK-79-03-27-5FL
	1 OF 2	STAMP	TOOL NO. SK-79-02125FL

**MacMILLAN ASSOCIATES CONSULTING ENGINEERS**  
714 EAST MIDLAND STREET • BAY CITY, MICHIGAN 48706  
(889) 894-4300 • (810) 232-7230 • FACSIMILE (889) 894-9930