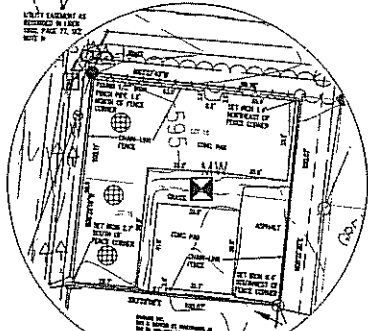


EAST INTERSECTING SEWER:  
 THE INTERSECTING SEWER LINE HAS BEEN PLOTTED PER  
 FIELD EVIDENCE AND ASSET PLAN SHEET 13 "EAST  
 INTERSECTING SEWER", DATED 12-31-08.

- LEGEND**
- = SET 1/2" BOX & CAP
  - = WELL
  - with dot = FLOOD INDICATOR
  - with dot = WOOD SHED
  - △ = SET P.C. MARK
  - △ with dot = BURN SPOT
  - with 'X' = FLOOD SIGN
  - △ with 'X' = CLEAN OUT
  - with 'X' = LIGHT POLE
  - with 'X' = SIGN
  - with 'X' = POWER POLE
  - with 'X' = MAN HOLE
  - with 'X' = BOX
  - with 'X' = WAREHOUSE
  - with 'X' = MAIL BOX
  - with 'X' = ALLY MARK
  - with 'X' = ROAD SIGN
  - with 'X' = GAS METER
  - with 'X' = HYDRANT
  - with 'X' = WATER VALVE BOX
  - with 'X' = SPRAWLER HEAD
  - with 'X' = MONITORING WELL
  - with 'X' = FLOOD DITCH BARRIAGE
  - with 'X' = INLET
  - with 'X' = TELEPHONE WIRE
  - with 'X' = AIR CONDITION UNIT
  - with 'X' = METAL LIGHT POLE
  - with 'X' = FLOOR LIGHT
  - with 'X' = ELECTRICAL OUTLET
  - with 'X' = POWER POLE
  - with 'X' = ELECTRICAL PAD
  - with 'X' = ELECTRICAL METER
  - with 'X' = ELECTRICAL PANELS
  - with 'X' = FLAG "UNDERGROUND UTILITY"
  - with 'X' = STRAP
  - with 'X' = EDGE OF WALK
  - with 'X' = EXISTING ANY LINE
  - with 'X' = PROPOSED EXISTENT WELL
  - with 'X' = CENTERLINE OF ROAD
  - with 'X' = WOOD SIGN
  - with 'X' = SIGN SIGN
  - with 'X' = SANITARY SEWER
  - with 'X' = TELEPHONE (UNDERGROUND)
  - with 'X' = ELECTRIC (UNDERGROUND)
  - with 'X' = GAS
  - with 'X' = OVERHEAD
  - with 'X' = EX. FENCE
  - with 'X' = REGULAR TREE
  - with 'X' = CENTRAL TREE
  - with 'X' = MATURE TREE
  - with 'X' = CONTIGUOUS WOOD
  - with 'X' = REGULAR SHrub
  - with 'X' = EX. TREE LINE

**BENCHMARKS**

- BENCHMARK #1  
 ELEVATION=505.57  
 TOP SW FLANGE BOLT ON  
 HYDRANT IN SW CORNER OF  
 TOWN AND WATER STREET.
- BENCHMARK #2  
 ELEVATION=524.15  
 ARMY CORPS OF  
 ENGINEERING LOG IN OLD  
 RAILROAD BRIDGE ABUTMENT.
- BENCHMARK #3  
 ELEVATION=508.13  
 TOP WEST FLANGE BOLT  
 1/4" AT 22.5' NORTH OF  
 TOWN CENTER 200-15TH  
 BRICK BLDG EAST SIDE  
 MAIN ST.



DETAIL-NOT TO SCALE

TO THE CITY OF BAY CITY, SSP ASSOCIATES, INC.; WARNER HODRIGGS & JACO LLP;  
 AND FIRST AMERICAN TITLE INSURANCE COMPANY.

THIS IS TO CERTIFY THAT THIS MAP OR PLAN AND THE SURVEY ON WHICH IT IS BASED  
 WERE MADE IN ACCORDANCE WITH THE 2011 MICHIGAN STANDARD DETAIL REQUIREMENTS  
 FOR ALTA/ACSM LAND TITLE SURVEYS, SCHEMATICALLY ESTABLISHED AND ADOPTED BY ALTA  
 AND NSPS, AND INCLUDES ITEMS 3, 4, 5, 6A, 6B, 7A, 8, 10B, 13, 14, 16 AND 17 OF  
 TABLE A, THEREBY. THE FIELD WORK WAS COMPLETED ON MARCH 29, 2011.



JONATHAN REX, P.S. REGISTERED  
 4-6-10  
 DATE

SHEET # 1 OF 2  
 JOB NO. 1103021

PREPARED FOR  
**CITY OF BAY CITY**  
**UPTOWN & NORTHERN SITES**  
 ALTA/ACSM LAND TITLE SURVEY



**ROWE PROFESSIONAL  
 SERVICES COMPANY**  
 127 S. Main Street  
 Mt. Pleasant, MI 48858  
 PHONE: 9-22-11, 10-03-11,  
 10-11-11, 10-13-11, 10-14-11,  
 12-20-11, 1-12-12, 1-23-12,  
 1-31-12, 2-20-12, 3-5-12, 9-5-12  
 OR (889) 772-2138  
 P: (889) 772-7737  
 www.rowepsc.com

PLAN DATE: MAY 11, 2011  
 PROJECT MGR.: JHR  
 REVIEWER: JHR  
 SCALE: 1"=100'  
 E-MAIL: JHR@ROWEPSC.COM